

STUDIO DAX PRESENTS

LOUISE MARSON

BREATH

23 SEPT - 18 DEC 2021

EXHIBITION CATALOGUE

Artwork

Details

Artist's Statement

RRP ex. GST

Dialogue of the O.K Series



Alone 2020
marble, smalti, china and
copper with patination from
the artist's urine
30 x 30cm

Alone expresses the overwhelming disconnection I have experienced from living through 6 months of covid lockdowns over the past year. Together with my two assistance dogs, I am a single celled organism floating in space. Horizonless, timeless, my head is encircled by a moat ... a halo of Verdigris, the copper patinated by my own bodily juices. My DNA tails wriggle and jiggle, playfully attempting to resist the containment of the encircling limestone. But it is a comfort. It holds me. I am contained ... and now I am also seen.

Collection
of the artist
- Not for
Sale



Shock therapy 2020
marble, glass, travertine,
limestone and Mexican smalti
30 x 30cm

Electroconvulsive therapy (ECT) is a procedure, done under general anaesthesia, in which small electric currents are passed through the brain, intentionally triggering a brief seizure. Science is unsure how it works but they think it causes changes in brain chemistry.

\$429



Skin deep 2019
marble, glass, travertine and
Italian smalti glass
30 x 30cm

We present to the world many protective layers in our being. It is often difficult to shed the layers, as it leaves one being exposed and vulnerable to our harsh environment. Do we want to expose what is really going on in our life? The mosaic reflects the multi layering effect and the challenges in getting to the core of our being.

\$429

Artwork

Details

Artist's Statement

RRP ex. GST



Treading water 2021
travertine and marble
30 x 30cm

Exhausted from treading and trying to bail out with a bottle of emptiness. It is hopeless... exhausted with no hope...I drift off in sadness and wake up in sadness. Stuck on survive, treading in deep water and so, so, so sad. My life - the life of sadness. I am "done"! The pills just keep me afloat, treading in sadness yet another day. Life has no purpose - my sense of being in this space of hopelessness. To stop "treading" - to drown brings me a sigh of relief. I am icy cold. Time stands still. Oh...relief!

\$429



Fishbowl eyes 2019
marble, glass, travertine and Italian smalti glass
30 x 30cm

One is drowning. There is no point, but clawing to just stay afloat. The claws are weak. There is no hope or point to being - disconnected. The fish in the bowl is immobilised. There is no light. There is no hope. Staff eyes constantly watching, but not interacting. The world outside critiques and is part of the world.

\$429



Seclusion 2019
marble, glass, travertine and Italian smalti glass
30 x 30cm

Clawing to the universe begging to end the pain. Acutely unwell in the seclusion room, one is confronted with four green walls and a mattress on the floor. What has your life become? You have nothing, except the blue hospital scrubs/PJ's. There is no interaction - except the peep hole and eyes.

\$429



Hands of self-harm 2020
marble, travertine, limestone, pebbles and Italian red smalti glass
30 x 30cm

The hand is the most frequently symbolised part of the human body. It gives blessing, it is expressive. In general, it is about strength, power and protection. But these hands are a coping mechanism to relieve intense emotional pain. These hands have the power to excite and prohibit, to express approval, wonder and shame.

\$429

Artwork

Details

Artist's Statement

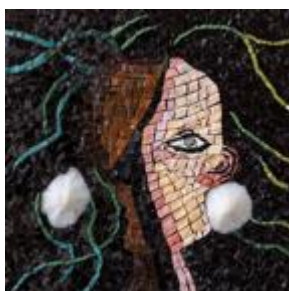
RRP ex. GST



Light at the end of the tunnel
2020
marble, smalti, granite
30 x 30cm

With mental illness, often there is no light at the end of the tunnel. This metaphoric expression dates from the 1800s and using this phrase for people who are distressed is generally not helpful. The brick wall is impenetrable, crushing one's hope. The tentacle-like roots are searching for light.

\$429



What's going on in my head?
2019
Italian smalti, marble, stone
30 x 30cm

With mental illness you often have a skewed perception of yourself. Your days can be consumed by ideas swimming around in your head and your perception of reality is distorted. I used faceted glass to depict the broken thoughts and extreme chemistry that one has. The person, much like shattered glass, can't go back to that person they used to be. The green hair depicts the manic mood swings ranging from depressive low to manic highs. The line down the middle illustrates the extremes of either depression or manic. Chemicals in your head are out of sync and the misinformed cast judgment calling that 'crazy'. No one likes to be labelled. Like Picasso's Weeping Women, the facial features are abstracted and the face is distorted.

\$429



Detour 2021
marble, gold and glass smalti
30 x 30cm

No one would recognize me now. You would not recognize me. Put together by an assortment of pills... so I can lift my head for another day. But no one really sees me now. I feel nothing. I exist in emptiness... helplessness. What a detour to the person you once knew? I make sure I won't be found out. There is nothing left. A detour of no return of emptiness and immobilization.

\$429

Artwork

Details

Artist's Statement

RRP ex. GST

Threaded Passages Series



Deoxygenation – purple passages 2020
marble, Mexican smalti, Italian smalti, slate, stone
60 x 86cm

Deoxygenation lets go of the confines of the square and works horizontally with varied approaches to passages and to the different shapes of the marble tesserae. It's lucky due to the "eight". Can you see the "squashed eight"? The adventures of the simple materials are bouncing from one passage to the next. One inhales leading to the next breath as the gap between the tesserae expands and contracts.

\$1,490



Oxygenation – pink passages 2020
marble, Mexican smalti, Italian smalti, slate, stone
60 x 86cm

This is "Purple Passages"' partner. It celebrates passages of tone and structure. The pink marble has a softness about it and is warmed by the chestnut adhesive which provides a sensitivity to the stone.

\$1,490



Convex - inhale 2020
marble, avocado pigment adhesive on recycled ceiling pressed metal
62 x 62cm

Inhale – the lungs expand. Oxygen rushes into the blood through the passages of blood vessels around the materials of the lungs – the alveoli. It gives life. The blue turns to red. It lights up the strong passages. It lives. It is alive. The pressed metal tin panel supports the mosaic, like how the ribs and the vertebrae support the lungs.

\$450



Concave - exhale 2020
marble, Italian smalti on recycled ceiling pressed metal
62 x 62cm

Exhale – the lungs collapse. It's blue. It has the power to initiate death if the passages do not open up again. The carbon dioxide initiates the next breath. Where's the passage of life?

\$450



Reading between the lines 2020
marble on recycled ceiling pressed metal
62 x 62cm

We can be misled, but sometimes we need to explore into or among the deeper aspects of something, as opposed to that are most easily identified.

\$450

Artwork

Details

Artist's Statement

RRP ex. GST



Broken 2020
marble, Italian smalti, Mexican smalti and stone on recycled ceiling pressed metal
62 x 62cm

When one suffers from mental illness, you can feel broken. It's like a fracture and this passage or broken bone will always be on x-ray. It reminds one "that things don't go back together" when broken.

\$450



Darkness 2020
marble, Italian smalti, slate on recycled ceiling pressed metal
62 x 62cm

The passage to shine has been broken. One is trying to find another thread in this darkness. But it is not easy. It is difficult to commit to life in the real world! The passage has been broken again and again.

\$450



Lines... which one am I? 2020
marble, Italian smalti, slate on recycled ceiling pressed metal
62 x 62cm

The small fragile slate passages or messages can be initially overlooked. But I don't tell what, where, when and which passage, because to disclose is to shed. It is too vulnerable, but yet complex. The passages are varied and sometimes simply constructed through tone and small tesserae developing into larger, but provide the complexity of wellness. The next passage sometimes sits underneath, or just goes off in a bizarre angle.

\$450

Forging A Head Series



Crossing over the line 2021
Carrara marble and broken coil ceramic pot
62 x 58cm

There is a dance between texture and space along with the fragility of the broken ceramic clay pot. There is respect for the continued beauty of the recycled clay and the celebration of its colour and texture. And there is dialogue between the marble and the clay, assembled as a labyrinth. Do we cross from one passage to the other in the labyrinth ... are we crossing over the line?

\$1,490

Artwork

Details

Artist's Statement

RRP ex. GST



Shifting sands 2021
marble on handmade mesh
substrate
65 x 65cm

'Shifting Sand' has been largely made using a single sheet of marble, meticulously cut and rearranged to simulate shifting sand. The rippling effect is the result of meticulous cutting and alignment of individual marble veins. Stone is the hero.

\$1,490



Rupture 2021
marble, slate, Italian smalti on
handmade mesh substrate
70 x 62cm

'Rupture' entices touch, heightening the fragile and complex intertwined ecologies of material and mental health that have been thrown into even more heightened states during Covid-19 isolation.

\$1,490



Substance 2021
four colours of Indian
sandstone – teakwood, raj
green brown, white mint,
shivuri pink
43 x 42cm

'Substance' reflects both the material characteristics of the place and the diversity of people at Collingwood Yards in Melbourne, where Louise Marson has her studio. 'Substance' is a homage to Jacquelin Low, who refined the use of paving materials to connect the two main buildings and championed the development of this unique creative community as the sites' inaugural General Manager.

Private
collection -
Not for sale



Lungs - between the spaces
2021
marble and Italian smalti
80 x 60cm

'Lungs - Between the Spaces' is an abstracted x-ray of the lungs, heart and vertebrae and invokes the breath of Covid-19. The hand cut materials oscillate to create varied spaces, textures, tone, contour and height, creating rigorous dialogue between materials and processes, texture and surface.

\$1,490



*Lungs - the space between
the passages* 2021
marble and Italian smalti in
custom steel frame
80 x 60cm

'Lungs - The Space Between the Passages' is an abstracted x-ray of the lungs and explores the passages between the tesserae which resembles the ribs. There are many different passages within the marble that use the interstices (the spaces between the tesserae) as active, not simply passive messages. It explores nuanced texture and surface undulation, in a continued exploration of the feeling emerging from material.

\$1,890

Artwork

Details

Artist's Statement

RRP ex. GST



Liquefaction 2021
marble, travertine and Italian smalti
44 x 55cm

Stable to the unstable, the uncertainty of the moment as what was solid, goes into liquefaction. Nothing is static. Becoming something else - the act of becoming

\$1,490



Tectonic 2021
travertine on handmade substrate
57 x 56cm

The is pushing, pulling, scraping and melting in response changes in the earth's crust

\$1,490



Subterranean 2021
travertine on handmade substrate
60 x 58cm

A glimpse of being, lying or operating under the surface of the earth's crust. If you pay attention, you can see the earth crying out beneath us.

\$1,490

LOUISE MARSON (SHE/HER)

www.louisemarson.com

m: 0439 479 385

Louise operates from Studio 11, Collingwood Yards, Perry Street, Collingwood

STUDIO DAX PRESENTS

LOUISE MARSON

BREATH

23 SEPT - 18 DEC 2021

EXHIBITION CATALOGUE

Artwork

Details

RRP ex. GST

Bands Series



Band One 2020

marble, cementitious adhesive on custom made
timber frame
27 x 80cm

\$450



Band Two 2020

marble, cementitious adhesive on custom made
timber frame
27 x 80cm

\$429



Band Four 2020

marble, cementitious adhesive on custom made
timber frame
19 x 80cm

\$350

Artwork

Details

RRP ex. GST



Band Seven 2020
marble, cementitious adhesive on custom made
timber frame
19 x 80cm

\$350



Band Eight 2020
marble, cementitious adhesive on custom made
timber frame
19 x 80cm

\$350



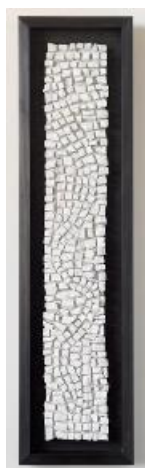
Band Nine 2020
marble, cementitious adhesive on custom made
timber frame
19 x 80cm

\$350

Artwork

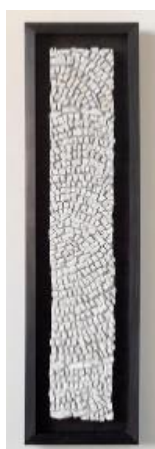
Details

RRP ex. GST



Band Ten 2020
marble, cementitious adhesive on custom made
timber frame
19 x 80cm

\$350



Band Eleven 2020
marble, cementitious adhesive on custom made
timber frame
19 x 80cm

\$350



Band Twelve 2020
marble, cementitious adhesive on custom made
timber frame
19 x 80cm

\$350

LOUISE MARSON (SHE/HER)

www.louisemarson.com

m: 0439 479 385

Louise operates from Studio 11, Collingwood Yards, Perry Street, Collingwood

Exhibition proudly supported by:

