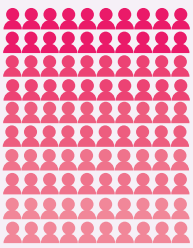


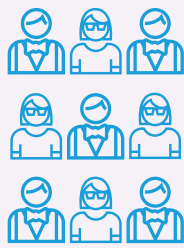


# EVALUATION OF EMOTIONAL LITERACY THROUGH VISUAL ARTS (ELVA)

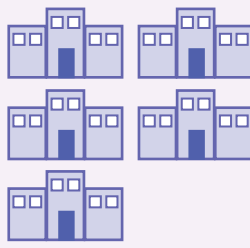
The ELVA approach, delivered by the Dax Institute, is designed to **enhance emotional literacy** in school aged children through the **employment of creativity**, specifically in the domain of **visual arts**. An evaluation was conducted to assess the **feasibility, acceptability and impact of ELVA** in disaster risk and affected areas.



100 CHILDREN



9 TEACHERS



5 SCHOOLS



surveys



child focus groups



teacher focus groups



FEB 2017



DEC 2017

3 MEASURES

2 TIME POINTS

## - RESULTS -



SURVEYS

While it did not reach statistical significance, there was a non-significant **trend towards an improvement in children's total difficulties (hyperactivity, emotional symptoms, conduct problems, and peer problems)**, based on Strengths and Difficulties Questionnaire scores before and after ELVA implementation.



CHILD FOCUS GROUPS

MAIN THEMES

- Understanding one's **own feelings**
- Understanding other people's **emotions**
- Creating a **safe and supportive** classroom environment



Once I was really angry and depressed at school. **Luckily there was ELVA** after that. That just really calmed me down.



TEACHER FOCUS GROUPS



### - Student Involvement -

I think it's evident that they do **really enjoy it** because of the way they keep asking if we're going to do it. They want to do it, they really do, and they do say **'we love ELVA'** to each other

### - Student Differences -

It has had more of **an impact** on . . . those kids that really struggle with social and emotional things for particular reasons outside of our control. **It's been very positive for them.**

### - Changes in Teachers-

If something happens and a child has an outburst, doing this has **improved my emotional literacy** because I go, 'All right, you're not angry at me.'

The multiple methods indicated that implementation of **ELVA was both feasible and acceptable** for the education settings involved.